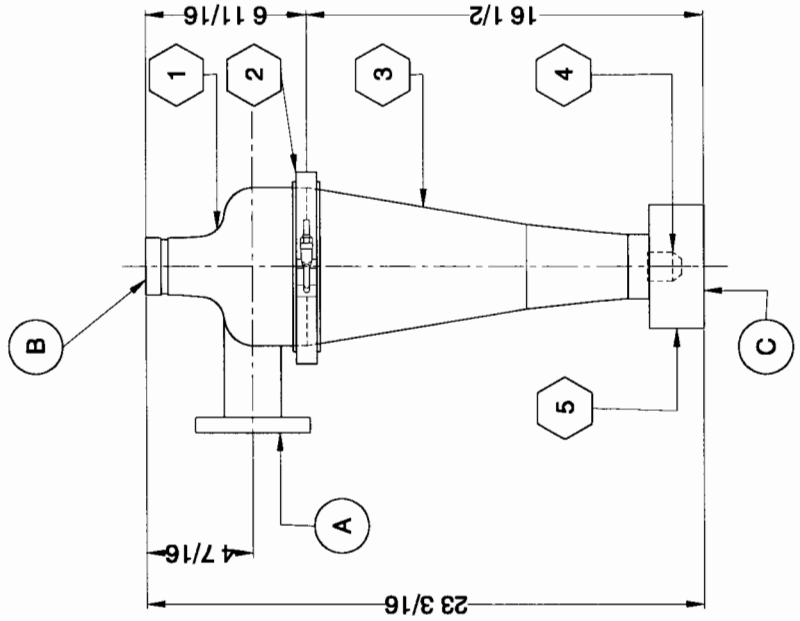


PLAN VIEW



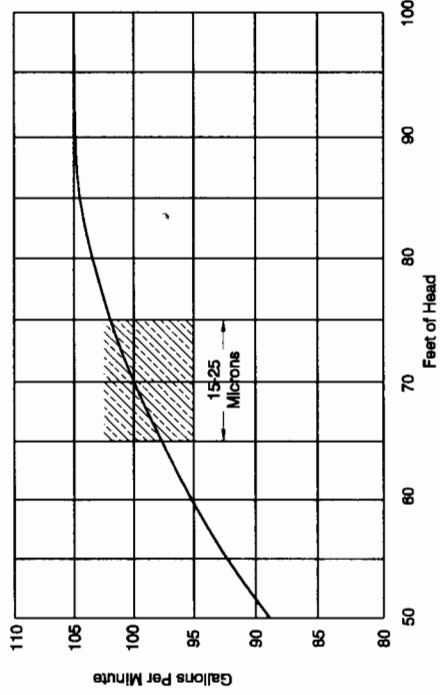
SIDE VIEW

BILL OF MATERIALS						
MARK	PART NO.	QUAN.	DESCRIPTION	LENGTH	WIDTH	WEIGHT
1	DS5SF1	1	5" Slimline Feed Section			6.00
2	DL5CC2	1	5" Cone Clamp			1.50
3	DL5SC3	1	5" Slimline Cone Body			5.50
4	DL4585	1	5" Apex Valve			0.05
5	DL45AH7	1	5" Apex Holder			1.00
TOTAL WEIGHT						14.05

PORT SCHEDULE	
MARK	DESCRIPTION
A	Inlet
B	Discharge
C	Underflow

Size
2" Nominal Opening w/ 1-1/4" 125# Flange
2" Groove
Adjustable

OPTIMUM PARTICLE SEPARATION CHART



NOTE: Optimum separation is obtained when operating in shaded range.

REVISIONS	
BY	DATE
DH	01/25/99

NO.	ZONE	DESCRIPTION
1	All	Gen. Revision

NOTES
1. All dimensions are in inches unless otherwise noted.

NOTICE

The information contained herein is proprietary and may not be copied or transmitted to another party without the written consent of the owner, THE DOUBLE LIFE CORP., INC.

DL the double life corp., inc.

CUSTOMER DRAWING
INSTALLATION DRAWING & PARTS LISTING
DOUBLE LIFE 5" CONE ASSEMBLY

PART NO.	DL5500	REV. DATE	MW	9/23/98
SCALE	NTS	REV. NO.	1	A
DRWING NO.	1/1	99-00844	1	A