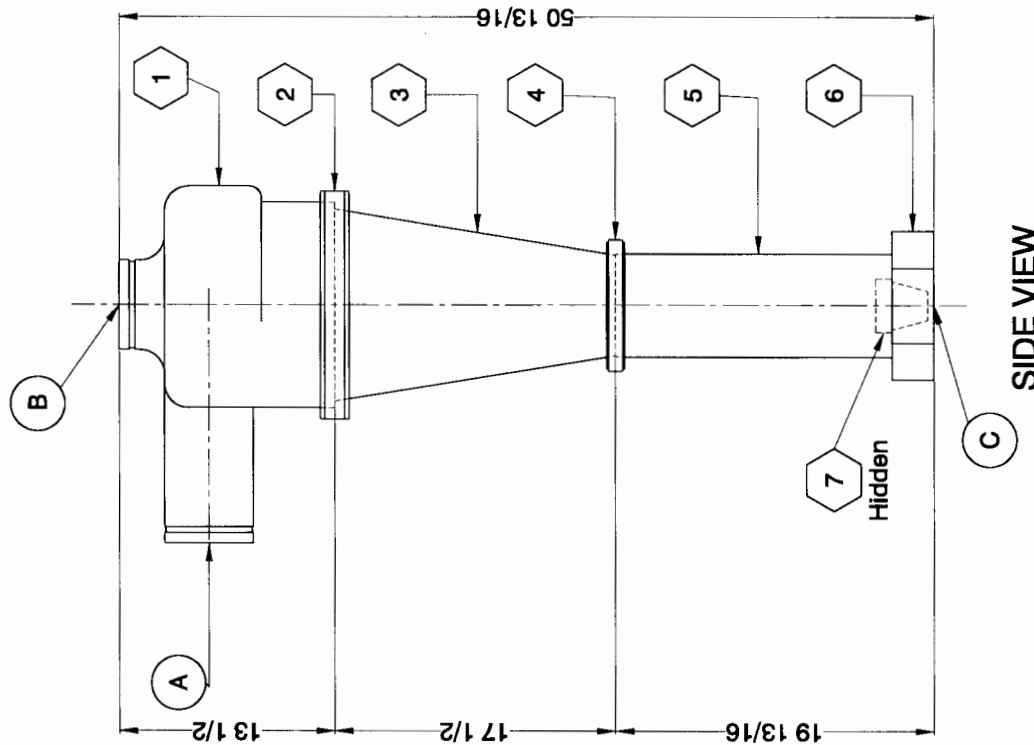


PLAN VIEW

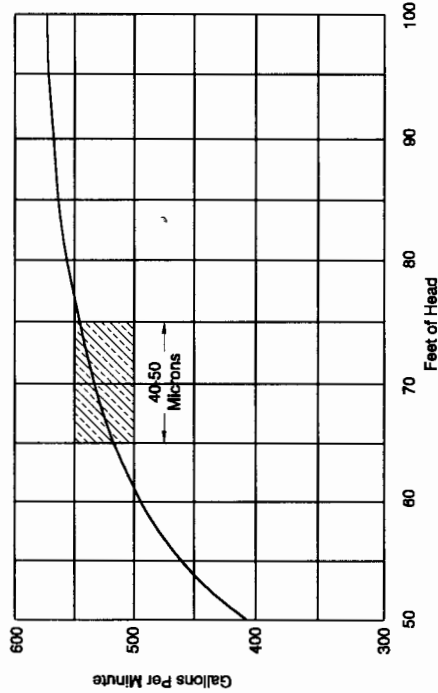


SIDE VIEW

BILL OF MATERIALS						
MARK	PART NO.	QUAN.	DESCRIPTION	LENGTH	WIDTH	WEIGHT
1	DL10F1	1	10" Feed Section			39.00
2	DL10C2	1	10" Upper Cone Clamp			3.50
3	DL10MC3	1	10" Mid-Cone Section			19.50
4	DLSSCC2	1	Cone Clamp 5" Slimline			1.50
5	DL10LC5	1	10" Lower Cone Body			17.50
6	DL10AH7	1	10" Apex Holder			3.50
7	DL10A6	1	Apex Valve			1.00
TOTAL WEIGHT						85.00

PORT SCHEDULE	
MARK	DESCRIPTION
A	Inlet
B	Discharge
C	Underflow

OPTIMUM PARTICLE SEPARATION CHART



NOTE: Optimum separation is obtained when operating in shaded range.

REVISIONS	DATE	BY	DESCRIPTION	NO.	ZONE
	01/25/99	DH	Gen Revision	1	All
	03/17/99	MW	Item 4	2	

NOTICE  
1. All dimensions are in inches unless otherwise noted.  
The information contained herein is proprietary and may not be copied or transmitted to another party without the written consent of the owner, THE DOUBLE LIFE CORP., INC.

**DL** the double life corp., inc.  
TITLE  
CUSTOMER DRAWING  
INSTALLATION DRAWING & PARTS LISTING  
DOUBLE LIFE 10" CONE ASSEMBLY  
PART NO. DL1000 DRAWN BY DATE MW 9/22/98 SCALE NTS  
SHEET NO. DRAWING NO. 1/1 REV. NO. 2 REV. DATE A 1